

NEW

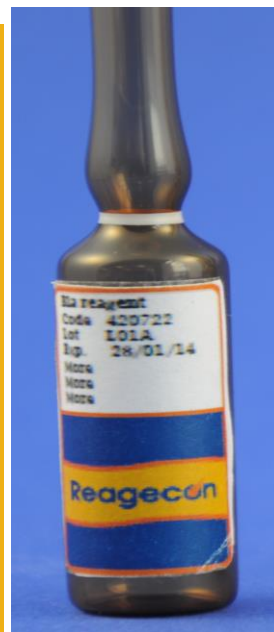
Volatile Organic Compounds (VOCs)

Manufactured by Reagecon

Reagecon
Delivering the Correct Result

Why use Reagecon's VOC Standards?

Commercial Benefits	Technical Benefits
<ul style="list-style-type: none"> • Ready to use (dilute for use as calibration and/or quality control standards) • Extensive range of organic compound mixes and single compound standards available • Can be used with a variety of instruments including GC, GC-MS and HPLC (LC-MS) • Designed specifically for use in EPA or EU analytical methods • Presented in high quality amber ampoules • Customised formulations available 	<ul style="list-style-type: none"> • Uncertainty of measurement (gravimetric) up to $\pm 0.6\%$ • Uncertainty of measurement (verification procedure) $\pm 2.49\%$ • Consistency of product -- Independent, traceable, certified. • Certificates of Analysis and SDS available online • Ideal for use in EPA 500, 600 and 8000 series methods



The products range from:-

- 200 $\mu\text{g/ml}$ (Mixed Standards)**
- 2,000 $\mu\text{g/ml}$ (Mixed Standards)**
- 2,000 $\mu\text{g/ml}$ (Single Component Standards)**

These products are prepared gravimetrically on a weight/weight basis. Both solute and solvent are weighed on a balance calibrated by Reagecon engineers using OIML traceable weights. Reagecon holds ISO 17025 accreditation for weighing, (ref. 265C) and the resulting certificate is issued in accordance with the requirements of ISO/IEC 17025. The concentration of each standard is verified using a high performance calibrated Gas Chromatography-Mass Spectrometer (GC-MS). The calibration of the GC-MS involves the use of high purity ISO Guide 34 accredited VOC standards similar in VOC concentration value to these products. The mass spectrum of each of the analytes is confirmed by comparison with the NIST mass spectral library.

Telephone
061 472622

Email
sales@reagecon.ie

Online sales
www.reagecon.com

NEW

Volatile Organic Compounds (VOCs)

Manufactured by Reagecon



Reagecon
Delivering the Correct Result

Volatile Organic Compounds (VOCs) Mixed Standards

Code	Description	Concentration	Packed in ampoule (ml)	US EPA Methods
REVOC001 (54 Compound Mix)	1,1-Dichlorethene (dichloroethylene) Dichloromethane (methylene chloride) trans-1,2-Dichloroethene 1,1-Dichloroethane cis-1,2-Dichloroethane 2,2-Dichloropropane Bromochloromethane Chloroform 1,1,1-Trichloroethane 1,1-Dichloropropene Carbon Tetrachloride 1,2-Dichloroethane Benzene Trichloroethene 1,2-Dichloropropane Dibromomethane Bromodichloromethane trans-1,3-Dichloropropene Toluene cis-1,3-Dichloropropene 1,3-Dichloropropane Tetrachloroethene Dibromochloromethane Dibromoethane Chlorobenzene 1,1,1,2-Tetrachloroethane Ethylbenzene m-Xylene p-Xylene o-Xylene Styrene Bromoform Isopropylbenzene 1,1,2,2-Tetrachloroethane	Each analyte at 2,000 µg/ml in Purge and Trap Methanol	1	502.2, 524.2, 8021, 8021A, 8021B, 8260B

Telephone

061 472622

Email

sales@reagecon.ie

Online sales

www.reagecon.com

NEW

Volatile Organic Compounds (VOCs)

Manufactured by Reagecon

Reagecon
Delivering the Correct Result

Code	Description	Concentration	Packed in ampoule (ml)	US EPA Methods
REVOC001 (continued)	1,2,3-Trichloropropane Bromobenzene n-Propylbenzene 2-Chlorotoluene 1,2,4-Trimethylbenzene 4-Chlorotoluene tert-Butylbenzene 1,3,5-Trimethylbenzene sec-Butylbenzene 1,3-Dichlorobenzene 4-Isopropyltoluene 1,4-Dichlorobenzene 1,2-Dichlorobenzene n-Butylbenzene 1,2-Dibromo-3-chloropropane 1,2,3-Trichlorobenzene Hexachlorobutadiene Naphthalene 1,2,4-Trichlorobenzene 1,1,2-Trichloroethane	Each analyte at 2,000 µg/ml in Purge and Trap Methanol	1	502.2, 524.2, 8021, 8021A, 8021B, 8260B

Telephone
061 472622

Email
sales@reagecon.ie

Online sales
www.reagecon.com

NEW

Volatile Organic Compounds (VOCs)

Manufactured by Reagecon



Reagecon
Delivering the Correct Result

Code	Description	Concentration	Packed in ampoule (ml)	Methods
REVOC002 (54 Compound Mix)	1,1-Dichlorethene (dichloroethylene) Dichloromethane (methylene chloride) trans-1,2-Dichloroethene 1,1-Dichloroethane cis-1,2-Dichloroethane 2,2-Dichloropropane Bromochloromethane Chloroform 1,1,1-Trichloroethane 1,1-Dichloropropene Carbon Tetrachloride 1,2-Dichloroethane Benzene Trichloroethene 1,2-Dichloropropane Dibromomethane Bromodichloromethane trans-1,3-Dichloropropene Toluene cis-1,3-Dichloropropene 1,3-Dichloropropane Tetrachloroethene Dibromochloromethane Dibromoethane Chlorobenzene 1,1,1,2-Tetrachloroethane Ethylbenzene m-Xylene p-Xylene o-Xylene Styrene Bromoform Isopropylbenzene 1,1,2,2-Tetrachloroethane	Each analyte at 200 µg/ml in Purge and Trap Methanol	1	502.2, 524.2, 8021, 8021A, 8021B, 8260B

Telephone
061 472622

Email
sales@reagecon.ie

Online sales
www.reagecon.com

NEW

Volatile Organic Compounds (VOCs)

Manufactured by Reagecon



Reagecon
Delivering the Correct Result

Code	Description	Concentration	Packed in ampoule (ml)	US EPA Methods
REVOC002 (continued)	1,2,3-Trichloropropane Bromobenzene n-Propylbenzene 2-Chlorotoluene 1,2,4-Trimethylbenzene 4-Chlorotoluene tert-Butylbenzene 1,3,5-Trimethylbenzene sec-Butylbenzene 1,3-Dichlorobenzene 4-Isopropyltoluene 1,4-Dichlorobenzene 1,2-Dichlorobenzene n-Butylbenzene 1,2-Dibromo-3-chloropropane 1,2,3-Trichlorobenzene Hexachlorobutadiene Naphthalene 1,2,4-Trichlorobenzene 1,1,2-Trichloroethane	Each analyte at 200 µg/ml in Purge and Trap Methanol	1	502.2, 524.2, 8021, 8021A, 8021B, 8260B

Telephone
061 472622

Email
sales@reagecon.ie

Online sales
www.reagecon.com

NEW

Volatile Organic Compounds (VOCs)

Manufactured by Reagecon

Reagecon
Delivering the Correct Result

Code	Description	Concentration	Packed in ampoule (ml)	US EPA Methods
REVOC003 (15 Compound Mix)	Bromoform Chlorobenzene Carbon Tetrachloride Chloroform Dibromochloromethane 1,1-Dichloroethane 1,2-Dichloroethane 1,1-Dichlorethene (dichloroethylene) trans-1,2-Dichloroethene 1,2-Dichloropropane Dichloromethane (methylene chloride) 1,1,2,2-Tetrachloroethane Tetrachloroethene 1,1,2-Trichloroethane Trichloroethene	Each analyte at 2,000 µg/ml in Purge and Trap Methanol	1	502.2, 524.2, 8021,8021A, 8021B, 624, 8240B, 8260B
REVOC004 (15 Compound Mix)	Bromoform Chlorobenzene Carbon Tetrachloride Chloroform Dibromochloromethane 1,1-Dichloroethane 1,2-Dichloroethane 1,1-Dichlorethene (dichloroethylene) trans-1,2-Dichloroethene 1,2-Dichloropropane Dichloromethane (methylene chloride) 1,1,2,2-Tetrachloroethane Tetrachloroethene 1,1,2-Trichloroethane Trichloroethene	Each analyte at 200 µg/ml in Purge and Trap Methanol	1	502.2, 524.2, 8021,8021A, 8021B, 8240B, 8260B

Telephone
061 472622

Email
sales@reagecon.ie

Online sales
www.reagecon.com

NEW

Volatile Organic Compounds (VOCs)

Manufactured by Reagecon

Reagecon
Delivering the Correct Result

Code	Description	Concentration	Packed in ampoule (ml)	US EPA Methods
REVOC005 (21 Compound Mix)	Bromobenzene Bromochloromethane Bromodichloromethane n-Butylbenzene 2-Chlorotoluene 4-Chlorotoluene Dibromoethane 1,2-Dichlorobenzene 1,3-Dichlorobenzene cis-1,2-Dichloroethane 1,3-Dichloropropane 1,1-Dichloropropene cis-1,3-Dichloropropene trans-1,3-Dichloropropene Ethylbenzene Isopropylbenzene Styrene 1,1,1,2-Tetrachloroethane 1,1,1-Trichloroethane 1,2,3-Trichloropropane p-Xylene	Each analyte at 2,000 µg/ml in Purge and Trap Methanol	1	502.2, 524.2, 8021,8021A, 8021B, 8240B, 8260B

Telephone
061 472622

Email
sales@reagecon.ie

Online sales
www.reagecon.com

NEW

Volatile Organic Compounds (VOCs)

Manufactured by Reagecon

Reagecon
Delivering the Correct Result

Code	Description	Concentration	Packed in ampoule (ml)	US EPA Methods
REVOC006 (21 Compound Mix)	Bromobenzene Bromochloromethane Bromodichloromethane n-Butylbenzene 2-Chlorotoluene 4-Chlorotoluene Dibromoethane 1,2-Dichlorobenzene 1,3-Dichlorobenzene cis-1,2-Dichloroethane 1,3-Dichloropropane 1,1-Dichloropropene cis-1,3-Dichloropropene trans-1,3-Dichloropropene Ethylbenzene Isopropylbenzene Styrene 1,1,1,2-Tetrachloroethane 1,1,1-Trichloroethane 1,2,3-Trichloropropane p-Xylene	Each analyte at 200 µg/ml in Purge and Trap Methanol	1	502.2, 524.2, 8021,8021A, 8021B, 8240B, 8260B
REVOC007 (17 Compound Mix)	Benzene sec-Butylbenzene tert-Butylbenzene 1,2-Dibromo-3-chloropropane 1,4-Dichlorobenzene 2,2-Dichloropropane Hexachlorobutadiene 4-Isopropyltoluene Naphthalene n-Propylbenzene Toluene 1,2,3-Trichlorobenzene 1,2,4-Trichlorobenzene 1,2,4-Trimethylbenzene 1,3,5-Trimethylbenzene	Each analyte at 2,000 µg/ml in Purge and Trap Methanol	1	502.2, 524.2, 8021,8021A, 8021B, 8260B

Telephone
061 472622

Email
sales@reagecon.ie

Online sales
www.reagecon.com

NEW

Volatile Organic Compounds (VOCs)

Manufactured by Reagecon



Reagecon
Delivering the Correct Result

Code	Description	Concentration	Packed in ampoule (ml)	US EPA Methods
	o-Xylene m-Xylene			
REVOC008 (17 Compound Mix)	Benzene sec-Butylbenzene tert-Butylbenzene 1,2-Dibromo-3-chloropropane 1,4-Dichlorobenzene 2,2-Dichloropropane Hexachlorobutadiene 4-Isopropyltoluene Naphthalene n-Propylbenzene Toluene 1,2,3-Trichlorobenzene 1,2,4-Trichlorobenzene 1,2,4-Trimethylbenzene 1,3,5-Trimethylbenzene o-Xylene m-Xylene	Each analyte at 200 µg/ml in Purge and Trap Methanol	1	502.2, 524.2, 8021,8021A, 8021B, 8260B
REVOC009 (4 Compound Mix)	Bromodichloromethane Bromoform Chloroform Dibromochloromethane	Each analyte at 2,000 µg/ml in Purge and Trap Methanol	1	501
REVOC010 (4 Compound Mix)	Bromodichloromethane Bromoform Chloroform Dibromochloromethane	Each analyte at 200 µg/ml in Purge and Trap Methanol	1	501
REVOC011 (9 Compound Mix)	Bromochloromethane Bromoform Carbon Tetrachloride Chloroform Dibromomethane 1,1-Dichloroethane 2,2-Dichloropropane Tetrachloroethene 1,1,1-Trichloroethane	Each analyte at 2,000 µg/ml in Purge and Trap Methanol	1	502.2, 524.2, 8021,8021A, 8021B

Telephone
061 472622

Email
sales@reagecon.ie

Online sales
www.reagecon.com

NEW

Volatile Organic Compounds (VOCs)

Manufactured by Reagecon

Reagecon
Delivering the Correct Result

Code	Description	Concentration	Packed in ampoule (ml)	US EPA Methods
REVOC012 (16 Compound Mix)	1,2-Dibromo-3-chloropropane Dibromoethane 1,2-Dichloroethane 1,2-Dichloropropane 1,3-Dichloropropane 1,1-Dichloropropene trans-1,3-Dichloropropene cis-1,3-Dichloropropene Hexachlorobutadiene 1,1,1,2-Tetrachloroethane 1,1,2,2-Tetrachloroethane 1,1,2-Trichloroethane Trichloroethene 1,2,3-Trichloropropane Naphthalene 1,2,4-Trimethylbenzene	Each analyte at 2,000 µg/ml in Purge and Trap Methanol	1	502.2, 524.2, 8021,8021A, 8021B
REVOC013 (11 Compound Mix)	Benzene Bromobenzene n-Butylbenzene Ethylbenzene 4-Isopropyltoluene Styrene Toluene 1,2,3-Trichlorobenzene 1,2,4-Trichlorobenzene 1,3,5-Trimethylbenzene 1,2,4-Trichlorobenzene	Each analyte at 2,000 µg/ml in Purge and Trap Methanol	1	502.2, 524.2, 8021,8021A, 8021B
REVOC014 (12 Compound Mix)	sec-Butylbenzene tert-Butylbenzene Chlorobenzene 2-Chlorotoluene 4-Chlorotoluene 1,2-Dichlorobenzene 1,3-Dichlorobenzene 1,4-Dichlorobenzene Isopropylbenzene	Each analyte at 2,000 µg/ml in Purge and Trap Methanol	1	502.2, 524.2, 8021,8021A, 8021B

Telephone
061 472622

Email
sales@reagecon.ie

Online sales
www.reagecon.com

NEW

Volatile Organic Compounds (VOCs)

Manufactured by Reagecon

Reagecon
Delivering the Correct Result

Code	Description	Concentration	Packed in ampoule (ml)	US EPA Methods
	n-Propylbenzene, o-Xylene, p-Xylene			
REVOC015 (28 Compound Mix)	1,2,4-Trimethylbenzene 1,2-Dichlorobenzene 1,3,5-Trimethylbenzene 1,3-Dichlorobenzene 1,4-Dichlorobenzene 2-Chlorotoluene Benzene Bromobenzene n-Butylbenzene tert-Butylbenzene sec-Butylbenzene Chlorobenzene 4-Chlorotoluene Ethylbenzene Hexachlorobutadiene Isopropylbenzene 4-Isopropyltoluene Naphthalene n-Propylbenzene Styrene Tetrachloroethene Toluene 1,2,3-Trichlorobenzene 1,2,4-Trichlorobenzene Trichloroethene m-Xylene p-Xylene o-Xylene	Each analyte at 200 µg/ml in Purge and Trap Methanol	1	503.1
REVOC016 (2 Compound Mix)	1,2-Dibromo-3-chloropropane Dibromoethane	Each analyte at 2,000 µg/ml in Purge and Trap Methanol	1 m	504, 8011
REVOC017 (3 Compound Mix)	1,2-Dibromo-3-chloropropane Dibromoethane 1,2,3-Trichloropropane	Each analyte at 2,000 µg/ml in Purge and Trap Methanol	1 ml	504.1

Telephone
061 472622

Email
sales@reagecon.ie

Online sales
www.reagecon.com

NEW

Volatile Organic Compounds (VOCs)

Manufactured by Reagecon



Reagecon
Delivering the Correct Result

Code	Description	Concentration	Packed in ampoule (ml)	US EPA Methods
REVOC018 (7 Compound Mix)	Benzene Chlorobenzene 1,2-Dichlorobenzene 1,3-Dichlorobenzene 1,4-Dichlorobenzene Ethylbenzene Toluene	Each analyte at 2,000 µg/ml in Purge and Trap Methanol	1	602
REVOC019 (7 Compound Mix)	Benzene Chlorobenzene 1,2-Dichlorobenzene 1,3-Dichlorobenzene 1,4-Dichlorobenzene Ethylbenzene Toluene	Each analyte at 200 µg/ml in Purge and Trap Methanol	1	602
REVOC020 (6 Compound Mix for BTEX)	Benzene Ethylbenzene Toluene m-Xylene p-Xylene o-Xylene	Each analyte at 2,000 µg/ml in Purge and Trap Methanol	1	602
REVOC021 (6 Compound Mix for BTEX)	Benzene Ethylbenzene Toluene m-Xylene p-Xylene o-Xylene	Each analyte at 200 µg/ml in Purge and Trap Methanol	1	602
REVOC022 (10 Compound Mix)	Benzene Chlorobenzene 1,3-Dichlorobenzene 1,4-Dichlorobenzene 1,2-Dichlorobenzene Ethylbenzene m-Xylene p-Xylene o-Xylene Toluene	Each analyte at 2,000 µg/ml in Purge and Trap Methanol	1	8020, 8020A

Telephone

061 472622

Email

sales@reagecon.ie

Online sales

www.reagecon.com

NEW

Volatile Organic Compounds (VOCs)

Manufactured by Reagecon

Reagecon
Delivering the Correct Result

Code	Description	Concentration	Packed in ampoule (ml)	US EPA Methods
REVOC023 (53 Compound Mix)	1,1-Dichlorethene (dichloroethylene) Dichloromethane (methylene chloride) trans-1,2-Dichloroethene 1,1-Dichloroethane cis-1,2-Dichloroethane 2,2-Dichloropropane Chloroform 1,1,1-Trichloroethane 1,1-Dichloropropene Carbon Tetrachloride 1,2-Dichloroethane Benzene Trichloroethene 1,2-Dichloropropane Dibromomethane Bromodichloromethane trans-1,3-Dichloropropene Toluene cis-1,3-Dichloropropene 1,3-Dichloropropane Tetrachloroethene Dibromochloromethane Dibromoethane Chlorobenzene 1,1,1,2-Tetrachloroethane Ethylbenzene m-Xylene p-Xylene o-Xylene Styrene Bromoform Isopropylbenzene 1,1,2,2-Tetrachloroethane 1,2,3-Trichloropropane Bromobenzene n-Propylbenzene	Each analyte at 2,000 µg/ml in Purge and Trap Methanol	1	8021,8021A, 8021B, 8260B

Telephone
061 472622

Email
sales@reagecon.ie

Online sales
www.reagecon.com

NEW

Volatile Organic Compounds (VOCs)

Manufactured by Reagecon

Reagecon
Delivering the Correct Result

Code	Description	Concentration	Packed in ampoule (ml)	US EPA Methods
	2-Chlorotoluene 1,2,4-Trimethylbenzene, 4-Chlorotoluene			
REVOC023 (continued)	tert-Butylbenzene 1,3,5-Trimethylbenzene sec-Butylbenzene 1,3-Dichlorobenzene 4-Isopropyltoluene 1,4-Dichlorobenzene 1,2-Dichlorobenzene n-Butylbenzene 1,2-Dibromo-3-chloropropane 1,2,3-Trichlorobenzene Hexachlorobutadiene Naphthalene 1,2,4-Trichlorobenzene 1,1,2-Trichloroethane	Each analyte at 2,000 µg/ml in Purge and Trap Methanol	1	8021,8021A, 8021B, 8260B
REVOC024 (25 Compound Mix)	Benzene Bromodichloromethane Bromoform Carbon Tetrachloride Chloroform Chlorobenzene Dibromochloromethane 1,1-Dichloroethane 1,2-Dichloroethane 1,2-Dichloropropane trans-1,3-Dichloropropene cis-1,3-Dichloropropene Dichloromethane (methylene chloride) Ethylbenzene Styrene 1,1,2,2-Tetrachloroethane Tetrachloroethene Toluene 1,1,1-Trichloroethane 1,1,2-Trichloroethane trans-1,2-Dichloroethene	Each analyte at 2,000 µg/ml in Purge and Trap Methanol	1	8240B

Telephone
061 472622

Email
sales@reagecon.ie

Online sales
www.reagecon.com

NEW

Volatile Organic Compounds (VOCs)

Manufactured by Reagecon



Reagecon
Delivering the Correct Result

	Trichloroethene m-Xylene, p-Xylene, o-Xylene			
--	---	--	--	--

Volatile Organic Compounds (VOCs) Single Component Standards

Code	Description	Concentration	Packed in ampoule (ml)	US EPA Methods
REVOC101	1,1-Dichlorethene	2,000 µg/ml in Purge and Trap Methanol	1	502.2, 524.2, 8021,8021A, 8021B, 624, 8240B, 8260B
REVOC102	Dichloromethane	2,000 µg/ml in Purge and Trap Methanol	1	502.2, 524.2, 8021,8021A, 8021B, 624, 8240B, 8260B
REVOC103	trans-1,2-Dichloroethene	2,000 µg/ml in Purge and Trap Methanol	1	502.2, 524.2, 8021,8021A, 8021B, 624, 8240B, 8260B
REVOC104	1,1-Dichloroethane	2,000 µg/ml in Purge and Trap Methanol	1	502.2, 524.2, 8021,8021A, 8021B, 624, 8240B, 8260B
REVOC105	cis-1,2-Dichloroethane	2,000 µg/ml in Purge and Trap Methanol	1	502.2, 524.2, 8021,8021A, 8021B, 624, 8240B, 8260B
REVOC106	2,2-Dichloropropane	2,000 µg/ml in Purge and Trap Methanol	1	502.2, 524.2, 8021,8021A, 8021B, 624, 8240B, 8260B

Telephone
061 472622

Email
sales@reagecon.ie

Online sales
www.reagecon.com

NEW

Volatile Organic Compounds (VOCs)

Manufactured by Reagecon

Reagecon
Delivering the Correct Result

Code	Description	Concentration	Packed in ampoule (ml)	US EPA Methods
REVOC107	Bromochloromethane	2,000 µg/ml in Purge and Trap Methanol	1	502.2, 524.2, 8021,8021A, 8021B, 624, 8240B, 8260B
REVOC108	Chloroform	2,000 µg/ml in Purge and Trap Methanol	1	502.2, 524.2, 8021,8021A, 8021B, 624, 8240B, 8260B
REVOC109	1,1,1-Trichloroethane	2,000 µg/ml in Purge and Trap Methanol	1	502.2, 524.2, 8021,8021A, 8021B, 624, 8240B, 8260B
REVOC110	1,1-Dichloropropene	2,000 µg/ml in Purge and Trap Methanol	1	502.2, 524.2, 8021,8021A, 8021B, 624, 8240B, 8260B
REVOC111	Carbon Tetrachloride	2,000 µg/ml in Purge and Trap Methanol	1	502.2, 524.2, 8021,8021A, 8021B, 624, 8240B, 8260B
REVOC112	1,2-Dichloroethane	2,000 µg/ml in Purge and Trap Methanol	1	502.2, 524.2, 8021,8021A, 8021B, 624, 8240B, 8260B
REVOC113	Benzene	2,000 µg/ml in Purge and Trap Methanol	1	502.2, 524.2, 8021,8021A, 8021B, 624, 8240B, 8260B
REVOC114	Trichloroethene	2,000 µg/ml in Purge and Trap Methanol	1	502.2, 524.2, 8021,8021A, 8021B, 624, 8240B, 8260B

Telephone
061 472622

Email
sales@reagecon.ie

Online sales
www.reagecon.com

NEW

Volatile Organic Compounds (VOCs)

Manufactured by Reagecon

Reagecon
Delivering the Correct Result

Code	Description	Concentration	Packed in ampoule (ml)	US EPA Methods
REVOC115	1,2-Dichloropropane	2,000 µg/ml in Purge and Trap Methanol	1	502.2, 524.2, 8021,8021A, 8021B, 624, 8240B, 8260B
REVOC116	Dibromomethane	2,000 µg/ml in Purge and Trap Methanol	1	502.2, 524.2, 8021,8021A, 8021B, 624, 8240B, 8260B
REVOC117	Bromodichloromethane	2,000 µg/ml in Purge and Trap Methanol	1	502.2, 524.2, 8021,8021A, 8021B, 624, 8240B, 8260B
REVOC118	trans-1,3-Dichloropropene	2,000 µg/ml in Purge and Trap Methanol	1	502.2, 524.2, 8021,8021A, 8021B, 624, 8240B, 8260B
REVOC119	Toluene	2,000 µg/ml in Purge and Trap Methanol	1	502.2, 524.2, 8021,8021A, 8021B, 624, 8240B, 8260B
REVOC120	cis-1,3-Dichloropropene	2,000 µg/ml in Purge and Trap Methanol	1	502.2, 524.2, 8021,8021A, 8021B, 624, 8240B, 8260B
REVOC121	1,3-Dichloropropane	2,000 µg/ml in Purge and Trap Methanol	1	502.2, 524.2, 8021,8021A, 8021B, 624, 8240B, 8260B

Telephone
061 472622

Email
sales@reagecon.ie

Online sales
www.reagecon.com

NEW

Volatile Organic Compounds (VOCs)

Manufactured by Reagecon

Reagecon
Delivering the Correct Result

Code	Description	Concentration	Packed in ampoule (ml)	US EPA Methods
REVOC121	1,3-Dichloropropane	2,000 µg/ml in Purge and Trap Methanol	1	502.2, 524.2, 8021,8021A, 8021B, 624, 8240B, 8260B
REVOC122	Tetrachloroethene	2,000 µg/ml in Purge and Trap Methanol	1	502.2, 524.2, 8021,8021A, 8021B, 624, 8240B, 8260B
REVOC123	Dibromochloromethane	2,000 µg/ml in Purge and Trap Methanol	1	502.2, 524.2, 8021,8021A, 8021B, 624, 8240B, 8260B
REVOC124	Dibromoethane	2,000 µg/ml in Purge and Trap Methanol	1	502.2, 524.2, 8021,8021A, 8021B, 624, 8240B, 8260B
REVOC125	Chlorobenzene	2,000 µg/ml in Purge and Trap Methanol	1	502.2, 524.2, 8021,8021A, 8021B, 624, 8240B, 8260B
REVOC126	1,1,1,2-Tetrachloroethane	2,000 µg/ml in Purge and Trap Methanol	1	502.2, 524.2, 8021,8021A, 8021B, 624, 8240B, 8260B
REVOC127	Ethylbenzene	2,000 µg/ml in Purge and Trap Methanol	1	502.2, 524.2, 8021,8021A, 8021B, 624, 8240B, 8260B

Telephone
061 472622

Email
sales@reagecon.ie

Online sales
www.reagecon.com

NEW

Volatile Organic Compounds (VOCs)

Manufactured by Reagecon

Reagecon
Delivering the Correct Result

Code	Description	Concentration	Packed in ampoule (ml)	Methods
REVOC128	m-Xylene	2,000 µg/ml in Purge and Trap Methanol	1	502.2, 524.2, 8021,8021A, 8021B, 624, 8240B, 8260B
REVOC129	p-Xylene	2,000 µg/ml in Purge and Trap Methanol	1	502.2, 524.2, 8021,8021A, 8021B, 624, 8240B, 8260B
REVOC130	o-Xylene	2,000 µg/ml in Purge and Trap Methanol	1	502.2, 524.2, 8021,8021A, 8021B, 624, 8240B, 8260B
REVOC131	Styrene	2,000 µg/ml in Purge and Trap Methanol	1	502.2, 524.2, 8021,8021A, 8021B, 624, 8240B, 8260B
REVOC132	Bromoform	2,000 µg/ml in Purge and Trap Methanol	1	502.2, 524.2, 8021,8021A, 8021B, 624, 8240B, 8260B
REVOC133	Isopropylbenzene	2,000 µg/ml in Purge and Trap Methanol	1	502.2, 524.2, 8021,8021A, 8021B, 624, 8240B, 8260B
REVOC134	1,1,2,2-Tetrachloroethane	2,000 µg/ml in Purge and Trap Methanol	1	502.2, 524.2, 8021,8021A, 8021B, 624, 8240B, 8260B

Telephone
061 472622

Email
sales@reagecon.ie

Online sales
www.reagecon.com

NEW

Volatile Organic Compounds (VOCs)

Manufactured by Reagecon

Reagecon
Delivering the Correct Result

Code	Description	Concentration	Packed in ampoule (ml)	US EPA Methods
REVOC135	1,2,3-Trichloropropane	2,000 µg/ml in Purge and Trap Methanol	1	502.2, 524.2, 8021,8021A, 8021B, 624, 8240B, 8260B
REVOC136	Bromobenzene	2,000 µg/ml in Purge and Trap Methanol	1	502.2, 524.2, 8021,8021A, 8021B, 624, 8240B, 8260B
REVOC137	n-Propylbenzene	2,000 µg/ml in Purge and Trap Methanol	1	502.2, 524.2, 8021,8021A, 8021B, 624, 8240B, 8260B
REVOC138	2-Chlorotoluene	2,000 µg/ml in Purge and Trap Methanol	1	502.2, 524.2, 8021,8021A, 8021B, 624, 8240B, 8260B
REVOC139	1,2,4-Trimethylbenzene	2,000 µg/ml in Purge and Trap Methanol	1	502.2, 524.2, 8021,8021A, 8021B, 624, 8240B, 8260B
REVOC140	4-Chlorotoluene	2,000 µg/ml in Purge and Trap Methanol	1	502.2, 524.2, 8021,8021A, 8021B, 624, 8240B, 8260B
REVOC141	tert-Butylbenzene	2,000 µg/ml in Purge and Trap Methanol	1	502.2, 524.2, 8021,8021A, 8021B, 624, 8240B, 8260B

Telephone
061 472622

Email
sales@reagecon.ie

Online sales
www.reagecon.com

NEW

Volatile Organic Compounds (VOCs)

Manufactured by Reagecon

Reagecon
Delivering the Correct Result

Code	Description	Concentration	Packed in ampoule (ml)	US EPA Methods
REVOC142	1,3,5-Trimethylbenzene	2,000 µg/ml in Purge and Trap Methanol	1	502.2, 524.2, 8021,8021A, 8021B, 624, 8240B, 8260B
REVOC143	sec-Butylbenzene	2,000 µg/ml in Purge and Trap Methanol	1	502.2, 524.2, 8021,8021A, 8021B, 624, 8240B, 8260B
REVOC144	1,3-Dichlorobenzene	2,000 µg/ml in Purge and Trap Methanol	1	502.2, 524.2, 8021,8021A, 8021B, 624, 8240B, 8260B
REVOC145	4-Isopropyltoluene	2,000 µg/ml in Purge and Trap Methanol	1	502.2, 524.2, 8021,8021A, 8021B, 624, 8240B, 8260B
REVOC146	1,4-Dichlorobenzene	2,000 µg/ml in Purge and Trap Methanol	1	502.2, 524.2, 8021,8021A, 8021B, 624, 8240B, 8260B
REVOC147	1,2-Dichlorobenzene	2,000 µg/ml in Purge and Trap Methanol	1	502.2, 524.2, 8021,8021A, 8021B, 624, 8240B, 8260B
REVOC148	n-Butylbenzene	2,000 µg/ml in Purge and Trap Methanol	1	502.2, 524.2, 8021,8021A, 8021B, 624, 8240B, 8260B

Telephone
061 472622

Email
sales@reagecon.ie

Online sales
www.reagecon.com

NEW

Volatile Organic Compounds (VOCs)

Manufactured by Reagecon

Reagecon
Delivering the Correct Result

Code	Description	Concentration	Packed in ampoule (ml)	US EPA Methods
REVOC149	1,2-Dibromo-3-chloropropane	2,000 µg/ml in Purge and Trap Methanol	1	502.2, 524.2, 8021,8021A, 8021B, 624, 8240B, 8260B
REVOC150	1,2,3-Trichlorobenzene	2,000 µg/ml in Purge and Trap Methanol	1	502.2, 524.2, 8021,8021A, 8021B, 624, 8240B, 8260B
REVOC151	Hexachlorobutadiene	2,000 µg/ml in Purge and Trap Methanol	1	502.2, 524.2, 8021,8021A, 8021B, 624, 8240B, 8260B
REVOC152	Naphthalene	2,000 µg/ml in Purge and Trap Methanol	1	502.2, 524.2, 8021,8021A, 8021B, 624, 8240B, 8260B
REVOC153	1,2,4-Trichlorobenzene	2,000 µg/ml in Purge and Trap Methanol	1	502.2, 524.2, 8021,8021A, 8021B, 624, 8240B, 8260B
REVOC154	1,1,2-Trichloroethane	2,000 µg/ml in Purge and Trap Methanol	1	502.2, 524.2, 8021,8021A, 8021B, 624, 8240B, 8260B

Telephone
061 472622

Email
sales@reagecon.ie

Online sales
www.reagecon.com

NEW

Volatile Organic Compounds (VOCs)

Manufactured by Reagecon

Reagecon
Delivering the Correct Result

Telephone
061 472622

Email
sales@reagecon.ie

Online sales
www.reagecon.com